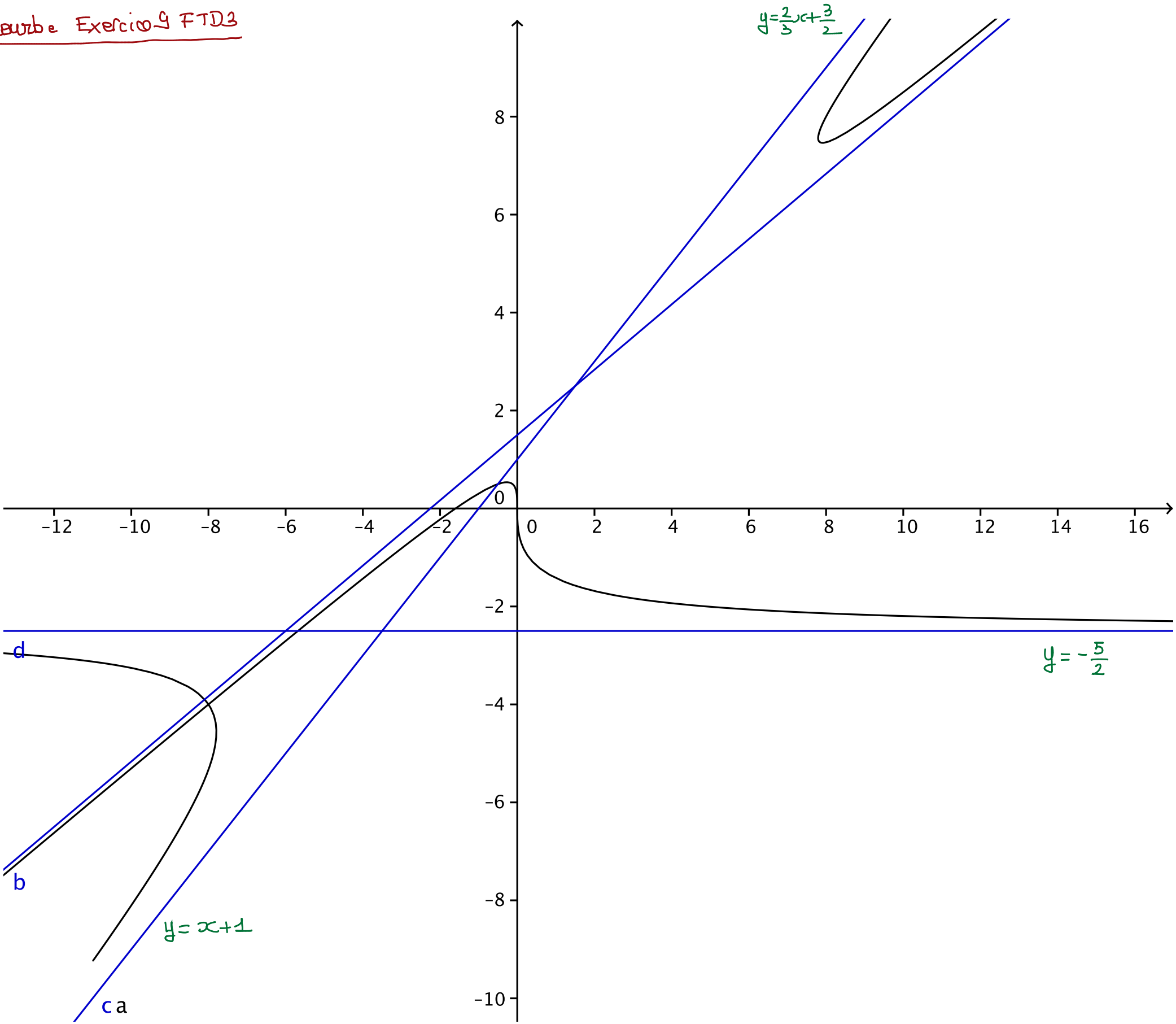


Curbe Exercio 9 FTD3



$$y = \frac{2}{3}x + \frac{3}{2}$$

$$y = x + 1$$

$$AC = -\frac{1}{2}$$

d

b

ca

0

-12 -10 -8 -6 -4 -2 0 2 4 6 8 10 12 14 16

2 4 6 8

-2

-4

-6

-8

-10